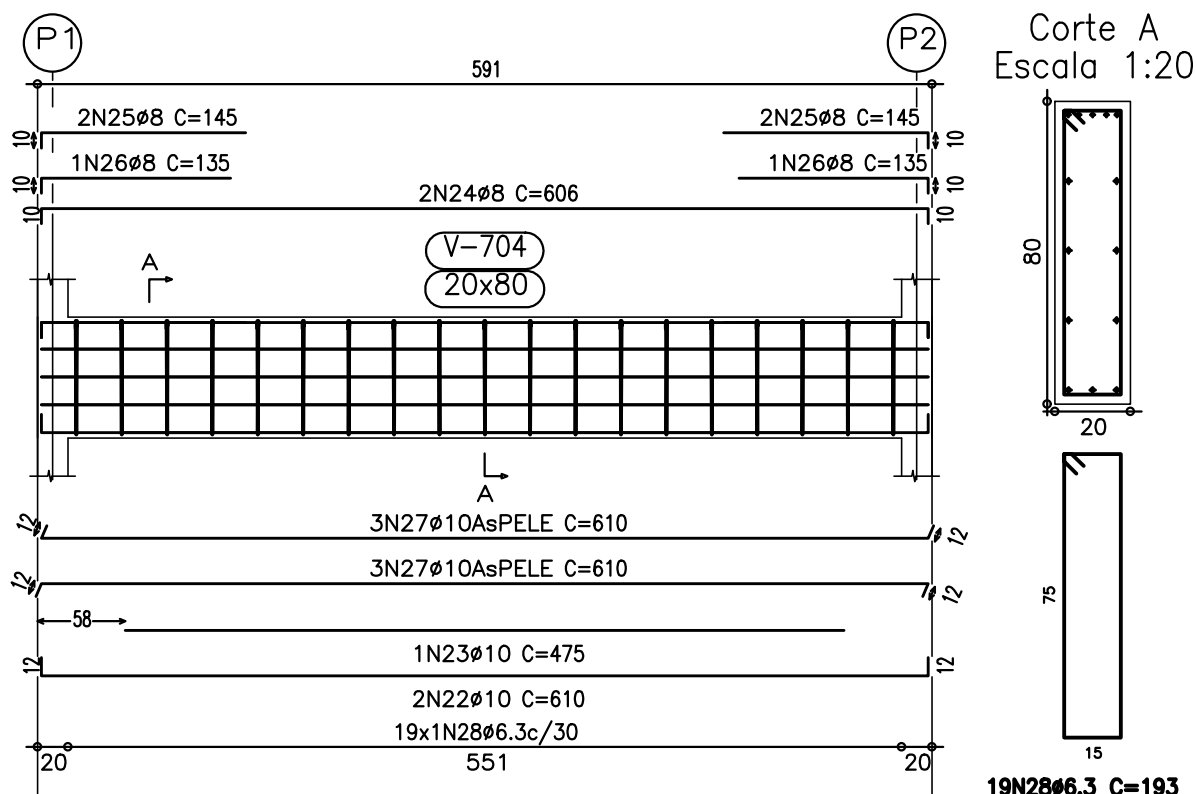


BARRILETE
Desenho de vigas
Concreto: C25, em geral
Aço: CA-50-A e CA-60-B
Escala vigas: 1:50
Escala seções: 1:20

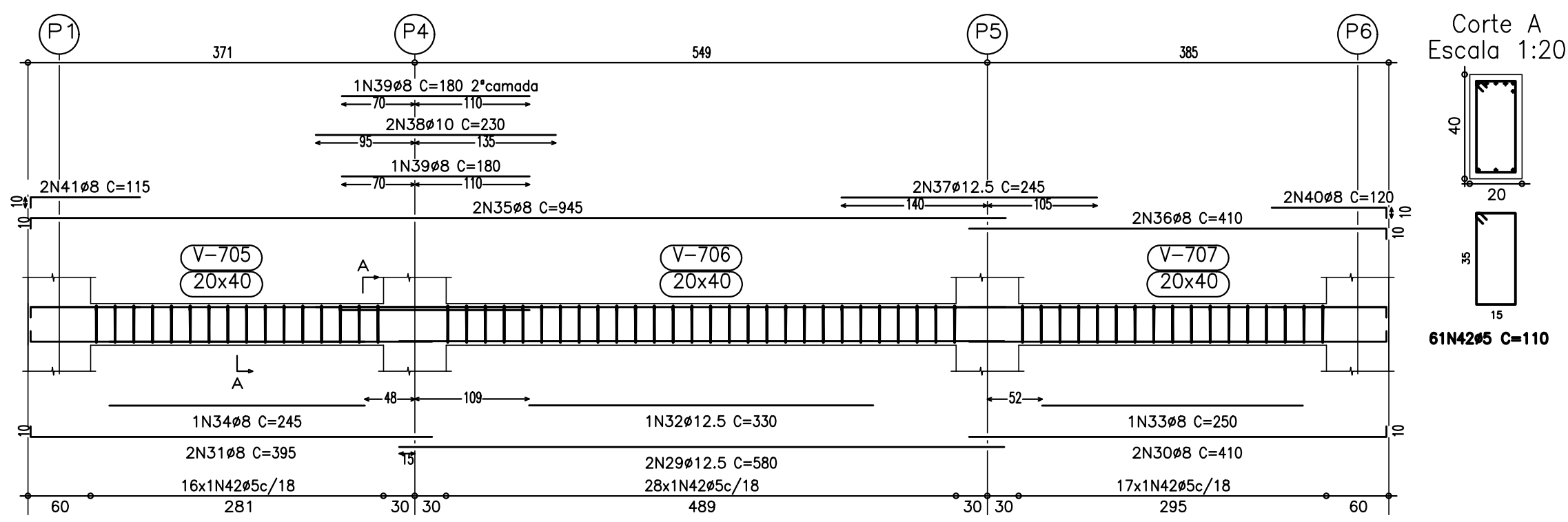
Resumo Aço	Comp. total	Peso+10%	Total
CA-50-A Ø6.3	56.0	15	
Ø8	173.7	75	
Ø10	187.4	129	
Ø12.5	34.7	37	256
CA-60-B Ø5	216.7	37	37
Total			293

Elemento	Pos.	Diam.	Q.	Dob.(cm)	Ret.(cm)	Dob.(cm)	Comp.(cm)	Total	CA-50-A	CA-60-B	
V 604	1	Ø10	3	12	586	12	610	1830	11.5		
	2	Ø10	2	17	586	17	620	1240	4.9		
	3	Ø8	2	14	136	14	150	300	1.9		
	4	Ø10	2	14	136	14	150	300	1.9		
	5	Ø8	2	135	10	145	290	1.1			
	6	Ø10	1	126	14	140	140	0.9			
	7	Ø5	3.1				110	3410		5.4	
Total+10%									27.3	5.9	
V 605	8	Ø10	2	12	586	12	610	1220	7.7		
	9	Ø10	2	18	586	18	620	1244	4.9		
	10	Ø10	2	14	136	14	150	300	1.9		
	11	Ø8	2	14	136	14	150	300	1.9		
	12	Ø10	2	135	15	135	135	0.8			
	13	Ø10	1	123	12	123	135	0.8			
	14	Ø10	1	126	14	140	140	0.9			
	15	Ø10	3.1				110	3410		5.4	
	16	Ø5	3.1							5.9	
Total+10%									32.8		
V 606	17	Ø10	2	12	586	12	610	1220	7.7		
	18	Ø10	1	135	10	135	145	580	2.3		
	19	Ø8	2	15	586	15	616	1232	4.8		
	20	Ø8	4	10	135		145	580	2.3		
	21	Ø5	3.1				110	3410		5.4	
Total+10%									18.7	5.9	
V 608	22	Ø10	2	12	586	12	610	1220	7.7		
	23	Ø10	1	135	10	135	145	580	2.3		
	24	Ø8	2	10	586	10	606	1212	4.8		
	25	Ø8	4	10	135		145	580	2.3		
	26	Ø8	2	10	125		135	270	1.1		
	27	Ø10	6	12	586	12	610	3660	23.0		
	28	Ø6.3	19				193	3667	9.1		
Total+10%									56.1		
V 609	29	Ø12.5	2	580		580	1160	11.4			
	30	Ø8	2	400	10	410	820	3.2			
	31	Ø8	2	10	385		395	790	3.1		
	32	Ø12.5	1	330		330	330	3.2			
	33	Ø8	1	250		250	250	1.0			
	34	Ø8	1	245		245	245	1.0			
	35	Ø8	2	10	935		945	1890	7.4		
	36	Ø8	2	400	10	410	820	3.2			
	37	Ø12.5	2	245		245	490	4.8			
	38	Ø10	2	230		230	460	2.9			
	39	Ø8	2	180		180	360	1.4			
	40	Ø8	2	110	10	120	240	0.9			
	41	Ø8	2	110		115	230	0.9			
	42	Ø5	6.1			110	6710			10.5	
Total+10%									48.8	11.6	
V 610	43	Ø12.5	2	580		580	1160	11.4			
	44	Ø10	2	12	410	12	434	868	5.5		
	45	Ø8	2	10	385		395	790	3.1		
	46	Ø12.5	1	330		330	330	3.2			
	47	Ø10	1	235		235	235	1.5			
	48	Ø8	1	205		205	205	0.8			
	49	Ø8	2	935		945	1890	7.4			
	50	Ø8	2	400	10	410	820	3.2			
	51	Ø10	2	265		265	530	3.3			
	52	Ø10	2	225		225	450	2.8			
	53	Ø8	2	185		185	370	1.5			
	54	Ø8	2	180		180	360	1.4			
	55	Ø8	3	120	10	130	390	1.5			
	56	Ø8	2	115		125	250	1.0			
	57	Ø10	6	390		390	2340	14.7			
	58	Ø5	43			110	4730			7.4	
	59	Ø6.3	10			193	1930	4.8			
Total+10%									73.8	8.1	
									Ø5:	0.0	37.4
									Ø6.3:	15.3	0.0
									Ø8:	75.1	0.0
									Ø10:	128.7	0.0
									Ø12.5:	37.4	0.0
									Total:	257.5	37.4

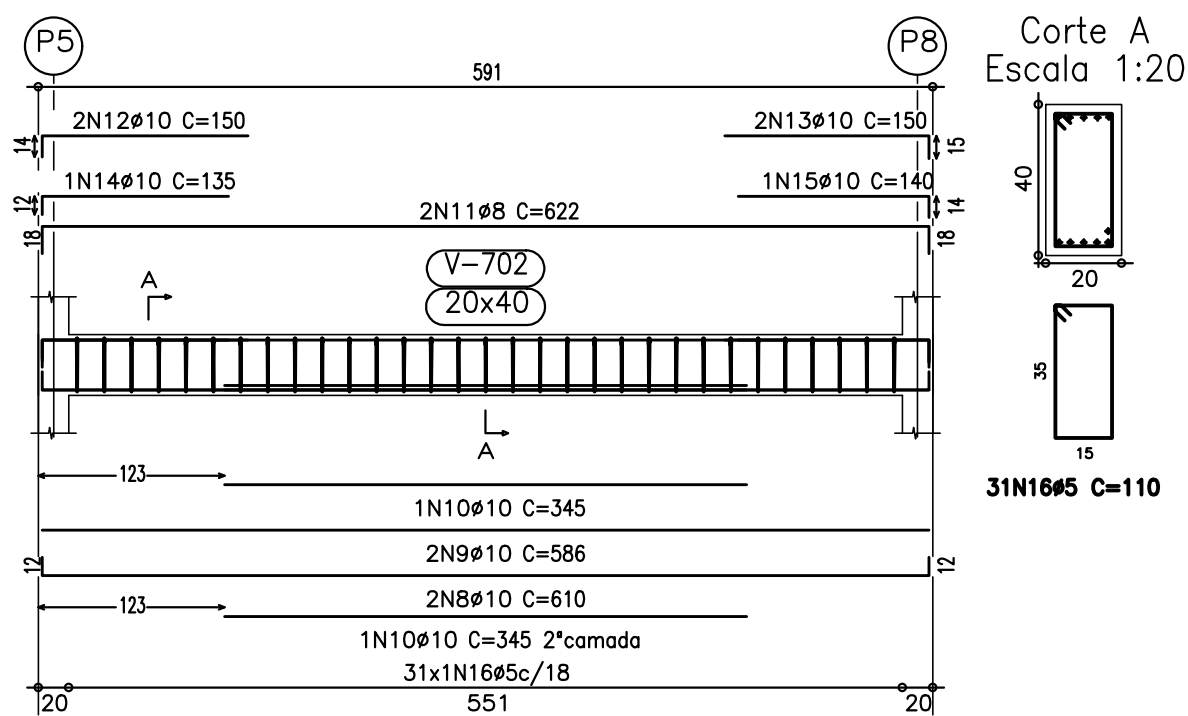
V 604
Escala 1:50



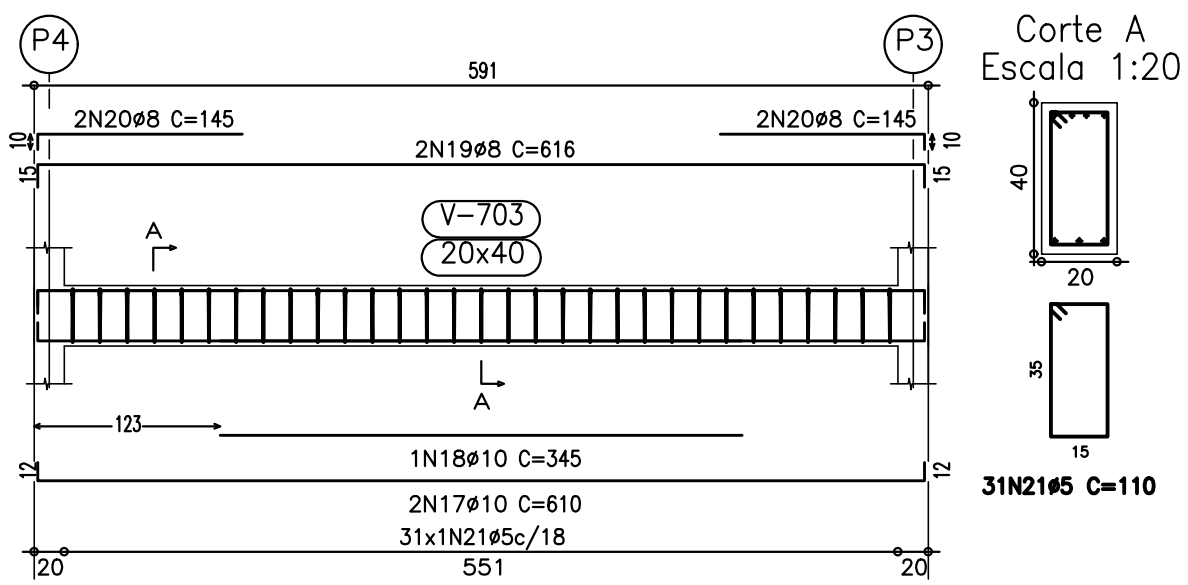
V 605
Escala 1:50



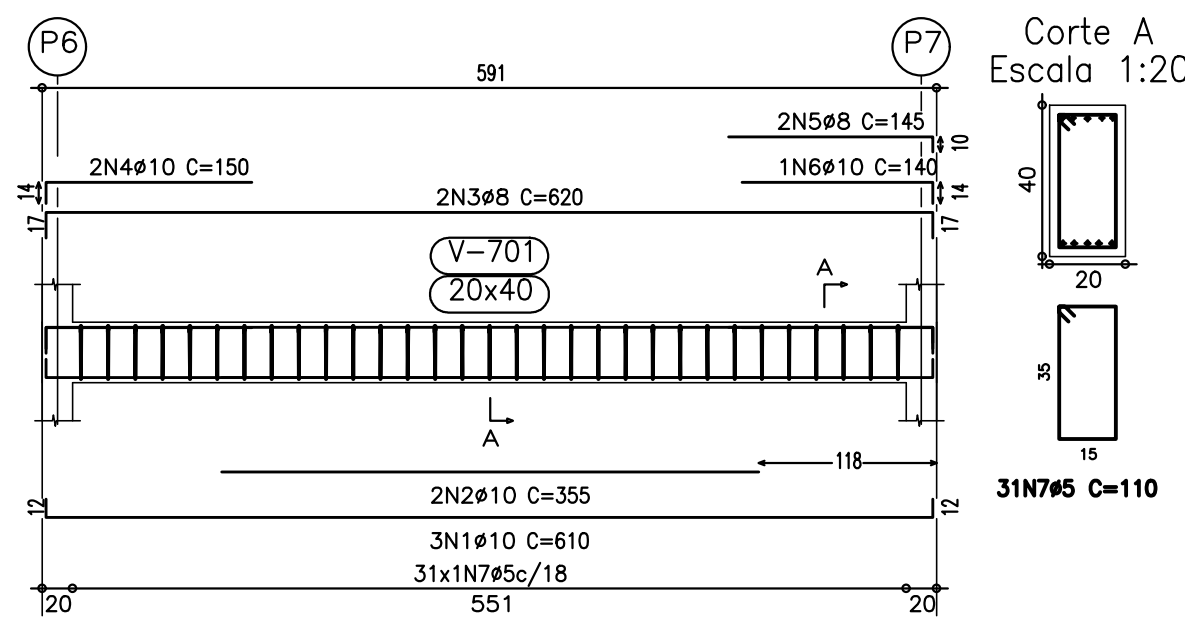
V 602
Escala 1:50



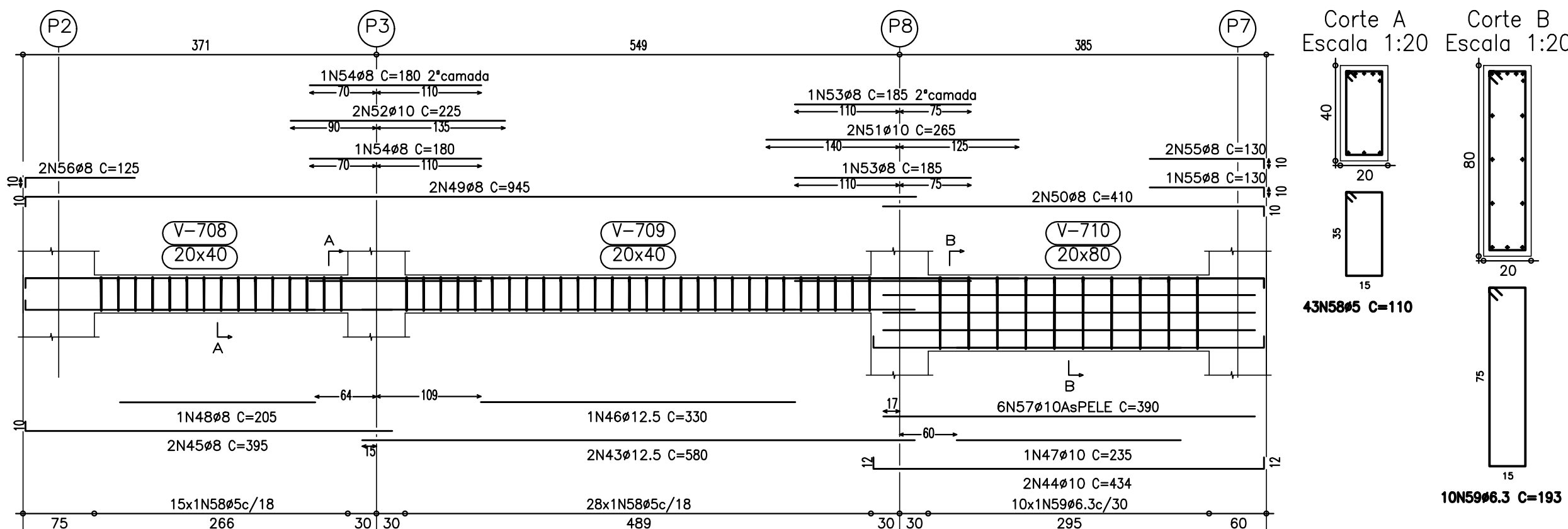
V 603
Escala 1:50



V 601
Escala 1:50



V 606
Escala 1:50



Nota:

Planta de referência: Prancha 19/64

AVALIAÇÃO DA QUALIDADE DA ESTRUTURA			
RECEBIMENTO PROVISÓRIO		ACEITAÇÃO DEFINITIVA	
AVALIADOR/CREA: BRUNO SILVEIRA MARTINS – 148751/D		PRANCHA REVISADA	
		RT DO PROJETO ORIGINAL: _____	
		KÊNIO ÁVILA FERNANDES	
		AVALIADOR	
		BRUNO SILVEIRA MARTINS – 148751/D	
REVISÃO	DESCRIÇÃO	DATA	
00	EMIÇÃO INICIAL	15/09/17	
01	NADA A REVISAR		
02	NADA A REVISAR		
03	NADA A REVISAR		
04	REVISÃO MUROS EM BLOCO – PRANCHA S/ MODIFICAÇÃO	03/07/18	
05	NADA A REVISAR		
06	NADA A REVISAR		
07	LICIT RESIDUAL: SOMENTE NUMERAÇÃO SEM REVISÃO PROJETO	05/05/21	